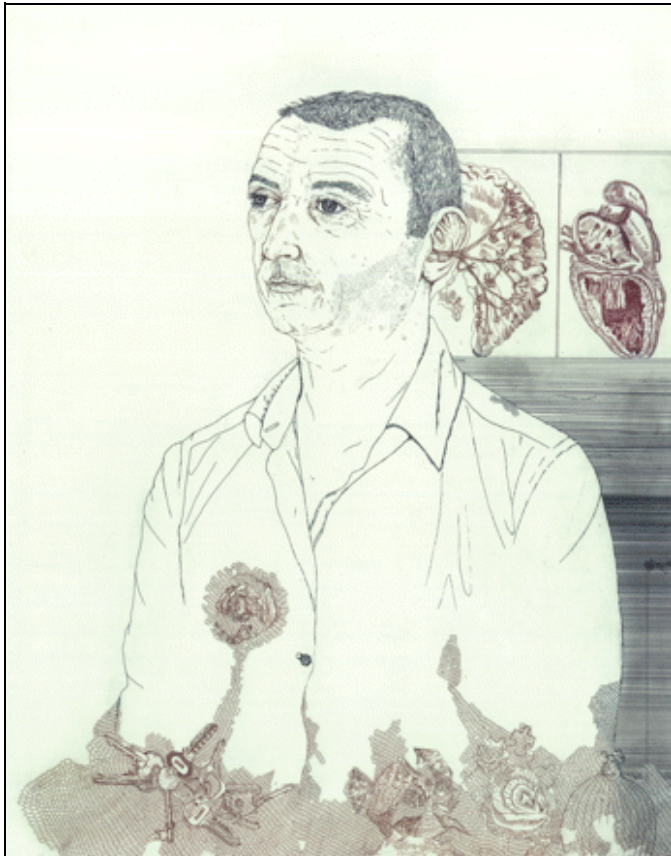


Author:  Keyword(s):

Go

Year:  Vol:  Page:

## About the Cover



Cover picture Portrait of Dr Tim McNerny by Gemma Anderson (b. 1981) Gemma Anderson studied fine art at the Royal College of Arts and at Falmouth College. The finely etched lines of her pictures are both diagrammatic and descriptive and the portrait of Dr McNerny contains references to the work of Richard Dadd as well as pseudo-scientific beliefs from previous psychiatric eras. Anderson and McNerny have collaborated to produce a series of portraits of the internal worlds of psychiatric patients and their doctors; creating images that provoke the viewer into a new understanding of how a patient might be experiencing symptoms of mental illness and how the doctor listens, formulates and treats. The portraits can be viewed at [www.gemma-anderson.co.uk](http://www.gemma-anderson.co.uk). Image courtesy of the artist and Jerwood Space. 'An Experiment in Collaboration', curated by Sarah Williams, was exhibited at Jerwood Space 30 July to 31 August 2008. We are always looking for interesting and visually appealing images for the cover of the Journal and would welcome suggestions or pictures which should be sent to Professor Robert Howard, British Journal of Psychiatry, 17 Belgrave Square, London SW1X 8PG, UK or [robert.howard@iop.kcl.ac.uk](mailto:robert.howard@iop.kcl.ac.uk)

[\[Table of Contents\]](#)